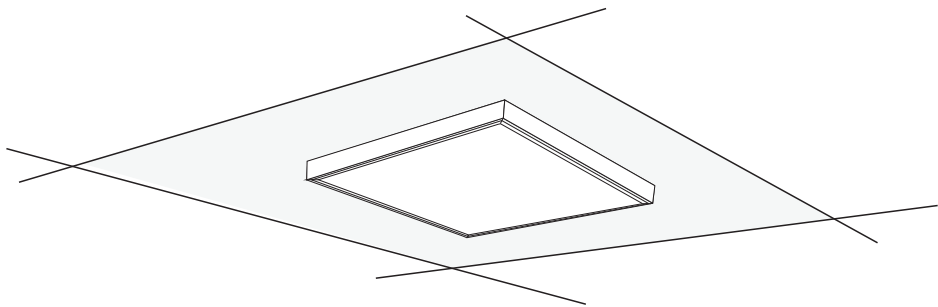


# SURFACE MOUNT FRAME

For TLP-X/F/M/A/E Series



## BEFORE YOU BEGIN

Read these instructions completely and carefully.

| ⚠ WARNING/AVERTISSEMENT  |   |
|--|---|
| <b>RISK OF ELECTRIC SHOCK</b> <ul style="list-style-type: none"><li>• Turn power off before inspection, installation or removal.</li><li>• Properly ground electrical enclosure.</li></ul> <b>RISK OF FIRE</b> <ul style="list-style-type: none"><li>• Follow all NEC and local codes.</li><li>• Use only UL or IEC approved wire for input/output connections. Minimum size 18 AWG (0.75mm²).</li></ul> | <b>RISQUES DE DÉCHARGES ÉLECTRIQUES</b> <ul style="list-style-type: none"><li>• Coupez l'alimentation avant d'inspecter, installer ou déplacer le luminaire.</li><li>• Assurez-vous de correctement mettre à la terre le boîtier d'alimentation électrique.</li></ul> <b>RISQUES D'INCENDIE</b> <ul style="list-style-type: none"><li>• Respectez tous les codes NEC et codes locaux.</li><li>• N'utilisez que des fils approuvés par UL ou IEC pour les entrées/sorties de connexion. Taille minimum 18 AWG (0.75mm²).</li></ul> |

## Prepare Electrical Wiring

Refer to *TLP Series LED Panel Specification* for more lamp electronical data info.



### Electrical Requirements

- The LED luminaire must be connected to the mains supply according to its ratings on the product label.



### Grounding Instructions

- The grounding and bonding of the overall system shall be done in accordance to local electric code of the country where the luminaire is installed.

## Save These Instructions

Use only in the manner intended by the manufacturer. If you have any questions, contact the manufacturer.

| ⚠ CAUTION   |
|---|
| Do not perforate the integrity of the luminaire. Only screw into the threaded mounting bracket holes located at the four corners of the fixture.  |
| ⚠ WARNING/AVERTISSEMENT   |
| <b>Risk of Fire.</b> Do not install insulation within 3 inches (76 mm) of luminaire top.<br><b>Risques d'incendie.</b> Ne pas installer d'isolation à moins de 76 mm (3 pouces) au-dessus du luminaire. |

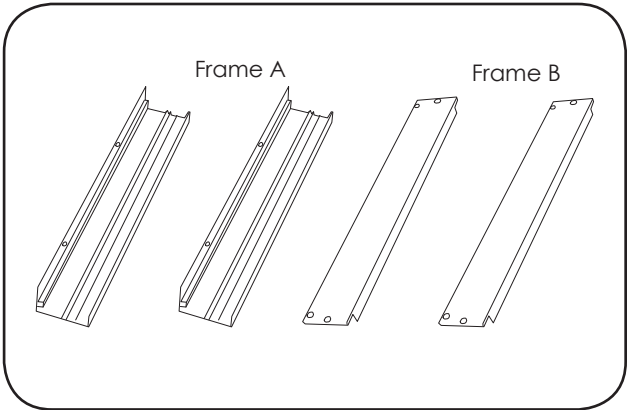
## Storage Info

|   |                    |
|---|--------------------|
| Environmental Operating Temperature Range | -10°C to +40°C     |
| Environmental Rating                      | Dry location rated |
| Environmental Storage Temperature Range   | -40°C to +60°C     |

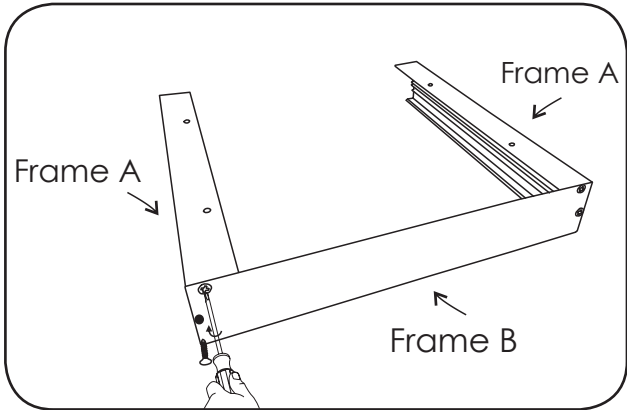
# SURFACE MOUNT FRAME KIT

| Items  | TLP- CL3030        | TLP- CL3060        | TLP- CL6060        | TLP- CL6262        | TLP- CL3012         | TLP- CL6012         |
|--|--------------------|--------------------|--------------------|--------------------|---------------------|---------------------|
| Frame Dimension  | L300xW300xH50 mm   | L300xW600xH50 mm   | L600xW600xH50 mm   | L624xW624xH50 mm   | L300xW1200xH50 mm   | L600xW1200xH50 mm   |
| <br>Frame A | L297 mm<br>X 2 pcs | L597 mm<br>X 2 pcs | L597 mm<br>X 2 pcs | L621 mm<br>X 2 pcs | L1197 mm<br>X 2 pcs | L1197 mm<br>X 2 pcs |
| <br>Frame B | L300 mm<br>X 2 pcs | L300 mm<br>X 2 pcs | L600 mm<br>X 2 pcs | L624 mm<br>X 2 pcs | L300 mm<br>X 2 pcs  | L600 mm<br>X 2 pcs  |
|             | X 8 pcs            |                    |                    |                    |                     |                     |
|             | X 4 pcs            |                    |                    | X 6 pcs            |                     |                     |

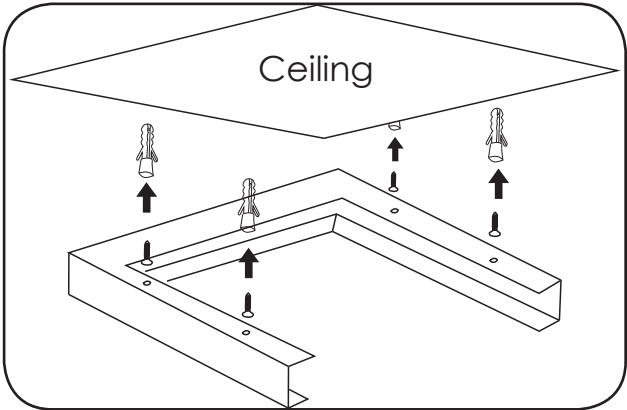
## INSTALLATION STEPS



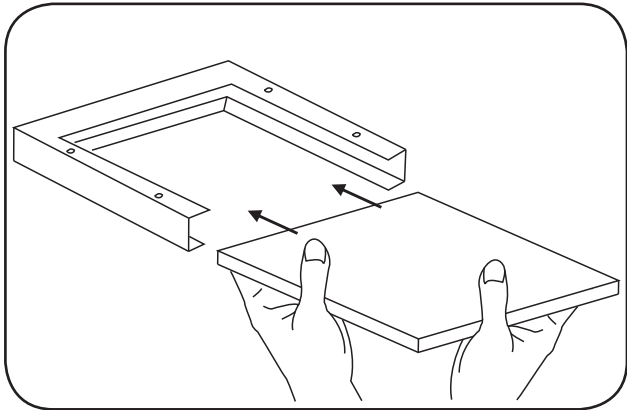
1 Identify the two frame types as illustrated above (Type A and B).



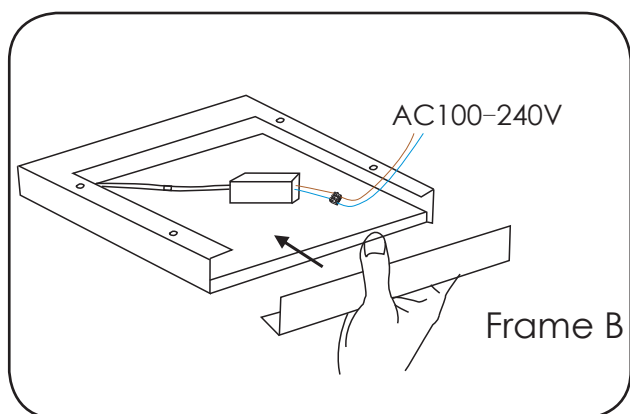
2 Fix the two 'A' frames together with one 'B' frame.



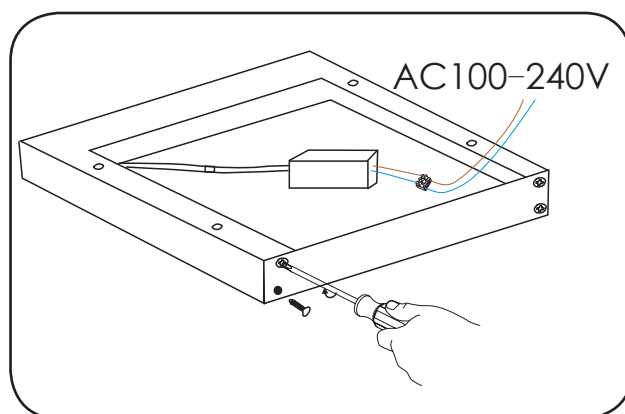
3 Mount the frame to the ceiling.



4 Slide the LED Panel in to the frame.



- 5 Insert the other 'B' frame on to the ends of the 'A' frames.



- 6 Fix the 'B' frame with the screws supplied.