

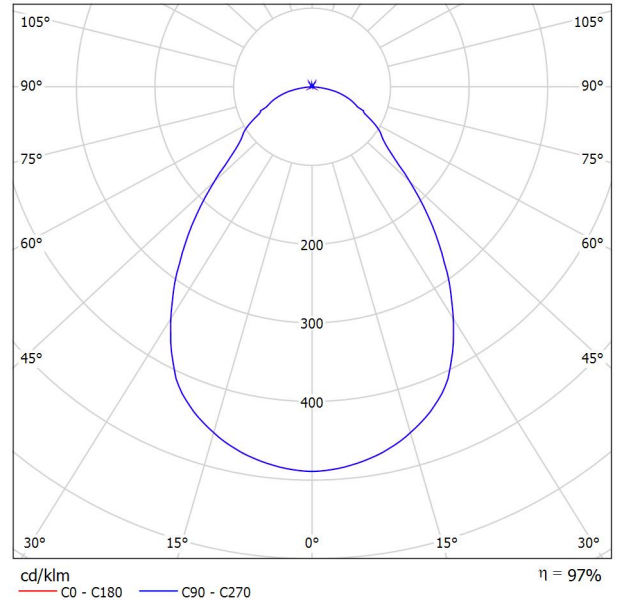


Operator
Telephone
Fax
e-Mail

TLP-F-6060N-40-U Panel Light / Luminaire Data Sheet

Luminous emittance 1:

See our luminaire catalog for an image of the luminaire.



Luminaire classification according to CIE: 100
CIE flux code: 61 86 96 100 97

Luminous emittance 1:

Glare Evaluation According to UGR											
ρ Ceiling	70	70	50	50	30	70	70	50	50	30	
ρ Walls	50	30	50	30	30	50	30	50	30	30	
ρ Floor	20	20	20	20	20	20	20	20	20	20	
Room Size X Y	Viewing direction at right angles to lamp axis					Viewing direction parallel to lamp axis					
2H	2H	13.7	14.8	14.0	15.0	15.3	14.6	15.7	14.9	15.9	16.2
	3H	15.2	16.2	15.5	16.5	16.8	16.4	17.4	16.7	17.7	17.9
	4H	15.9	16.9	16.2	17.1	17.4	17.2	18.1	17.5	18.4	18.7
	6H	16.5	17.4	16.8	17.7	18.0	17.8	18.7	18.2	19.0	19.3
	8H	16.6	17.5	17.0	17.8	18.1	18.1	18.9	18.4	19.2	19.6
12H	16.7	17.5	17.1	17.9	18.2	18.2	19.0	18.5	19.3	19.7	
4H	2H	14.0	15.0	14.4	15.3	15.6	14.8	15.8	15.1	16.0	16.3
	3H	15.7	16.5	16.1	16.9	17.2	16.7	17.6	17.1	17.9	18.2
	4H	16.6	17.4	17.0	17.7	18.1	17.7	18.4	18.1	18.8	19.1
	6H	17.4	18.1	17.8	18.4	18.8	18.6	19.2	19.0	19.6	20.0
	8H	17.7	18.3	18.2	18.7	19.1	19.0	19.5	19.4	19.9	20.4
12H	17.9	18.4	18.3	18.8	19.3	19.2	19.7	19.6	20.1	20.6	
8H	4H	17.1	17.6	17.5	18.0	18.5	18.0	18.6	18.4	19.0	19.4
	6H	18.0	18.5	18.5	19.0	19.4	19.1	19.5	19.5	20.0	20.4
	8H	18.5	18.9	19.0	19.4	19.8	19.5	19.9	20.0	20.4	20.9
	12H	18.8	19.2	19.3	19.6	20.2	19.9	20.2	20.4	20.7	21.2
12H	4H	17.1	17.6	17.6	18.1	18.5	18.0	18.5	18.5	19.0	19.4
	6H	18.2	18.6	18.7	19.0	19.5	19.1	19.6	19.6	20.0	20.5
	8H	18.7	19.0	19.2	19.5	20.0	19.7	20.0	20.2	20.5	21.0
Variation of the observer position for the luminaire distances S											
S = 1.0H	+0.3 / -0.3					+0.3 / -0.4					
S = 1.5H	+0.4 / -0.6					+0.4 / -0.8					
S = 2.0H	+0.6 / -1.1					+0.7 / -1.0					
Standard table	BK06					BK06					
Correction Summand	-2.9					-2.3					
Corrected Glare Indices referring to 3566lm Total Luminous Flux											

Operator
Telephone
Fax
e-Mail

TLP-F-6060N-40-U Panel Light / UGR-Table

Luminaire: TLP-F-6060N-40-U Panel Light
Lamps: 1 x NW

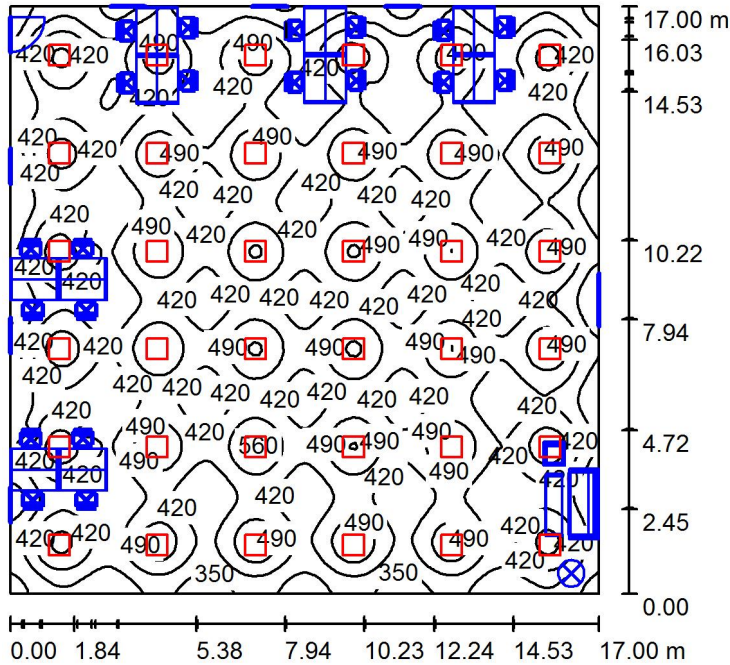
Glare Evaluation According to UGR											
ρ Ceiling		70	70	50	50	30	70	70	50	50	30
ρ Walls		50	30	50	30	30	50	30	50	30	30
ρ Floor		20	20	20	20	20	20	20	20	20	20
Room Size X Y		Viewing direction at right angles to lamp axis					Viewing direction parallel to lamp axis				
2H	2H	13.7	14.8	14.0	15.0	15.3	14.6	15.7	14.9	15.9	16.2
	3H	15.2	16.2	15.5	16.5	16.8	16.4	17.4	16.7	17.7	17.9
	4H	15.9	16.9	16.2	17.1	17.4	17.2	18.1	17.5	18.4	18.7
	6H	16.5	17.4	16.8	17.7	18.0	17.8	18.7	18.2	19.0	19.3
	8H	16.6	17.5	17.0	17.8	18.1	18.1	18.9	18.4	19.2	19.6
	12H	16.7	17.5	17.1	17.9	18.2	18.2	19.0	18.5	19.3	19.7
4H	2H	14.0	15.0	14.4	15.3	15.6	14.8	15.8	15.1	16.0	16.3
	3H	15.7	16.5	16.1	16.9	17.2	16.7	17.6	17.1	17.9	18.2
	4H	16.6	17.4	17.0	17.7	18.1	17.7	18.4	18.1	18.8	19.1
	6H	17.4	18.1	17.8	18.4	18.8	18.6	19.2	19.0	19.6	20.0
	8H	17.7	18.3	18.2	18.7	19.1	19.0	19.5	19.4	19.9	20.4
	12H	17.9	18.4	18.3	18.8	19.3	19.2	19.7	19.6	20.1	20.6
8H	4H	17.1	17.6	17.5	18.0	18.5	18.0	18.6	18.4	19.0	19.4
	6H	18.0	18.5	18.5	19.0	19.4	19.1	19.5	19.5	20.0	20.4
	8H	18.5	18.9	19.0	19.4	19.8	19.5	19.9	20.0	20.4	20.9
	12H	18.8	19.2	19.3	19.6	20.2	19.9	20.2	20.4	20.7	21.2
12H	4H	17.1	17.6	17.6	18.1	18.5	18.0	18.5	18.5	19.0	19.4
	6H	18.2	18.6	18.7	19.0	19.5	19.1	19.6	19.6	20.0	20.5
	8H	18.7	19.0	19.2	19.5	20.0	19.7	20.0	20.2	20.5	21.0
Variation of the observer position for the luminaire distances S											
S = 1.0H		+0.3 / -0.3					+0.3 / -0.4				
S = 1.5H		+0.4 / -0.6					+0.4 / -0.8				
S = 2.0H		+0.6 / -1.1					+0.7 / -1.0				
Standard table		BK06					BK06				
Correction Summand		-2.9					-2.3				
Corrected Glare Indices referring to 3566lm Total Luminous Flux											

The UGR values have been calculated according to CIE Publ. 117 Spacing-to-Height-Ratio = 1.00.



Operator
Telephone
Fax
e-Mail

Office 290m² / Summary



Height of Room: 2.800 m, Mounting Height: 2.800 m, Light loss factor: 0.80

Values in Lux, Scale 1:219

Surface	ρ [%]	E_{av} [lx]	E_{min} [lx]	E_{max} [lx]	u_0
Workplane	/	426	239	579	0.561
Floor	42	370	45	460	0.122
Ceiling	73	158	123	648	0.778
Walls (4)	73	212	52	284	/

Workplane:

Height: 0.850 m
Grid: 128 x 128 Points
Boundary Zone: 0.000 m

Luminaire Parts List

No.	Pieces	Designation (Correction Factor)	Φ (Luminaire) [lm]	Φ (Lamps) [lm]	P [W]
1	36	TLP-F-6060N-40-U Panel Light (1.000)	3467	3566	39.1
			Total: 124799	Total: 128387	1407.6

Specific connected load: 4.87 W/m² = 1.14 W/m²/100 lx (Ground area: 289.00 m²)

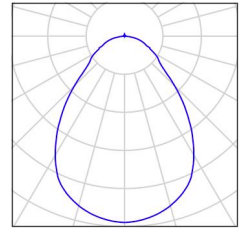


Operator
Telephone
Fax
e-Mail

Office 290m² / Luminaire parts list

36 Pieces TLP-F-6060N-40-U Panel Light
Article No.: TLP-F-6060N-40-U
Luminous flux (Luminaire): 3467 lm
Luminous flux (Lamps): 3566 lm
Luminaire Wattage: 39.1 W
Luminaire classification according to CIE: 100
CIE flux code: 61 86 96 100 97
Fitting: 1 x NW + 4000 Kelvin (Correction Factor 1.000).

See our luminaire catalog for an image of the luminaire.





Operator
Telephone
Fax
e-Mail

Office 290m² / Photometric Results

Total Luminous Flux: 124799 lm
Total Load: 1407.6 W
Light loss factor: 0.80
Boundary Zone: 0.000 m

Surface	Average illuminances [lx]			Reflection factor [%]	Average luminance [cd/m ²]
	direct	indirect	total		
Workplane	304	123	426	/	/
Floor	255	115	370	42	50
Ceiling	1.28	157	158	73	37
Wall 1	97	131	228	73	53
Wall 2	88	127	215	73	50
Wall 3	87	116	203	73	47
Wall 4	84	117	201	73	47

Uniformity on the working plane

u₀: 0.561 (1:2)

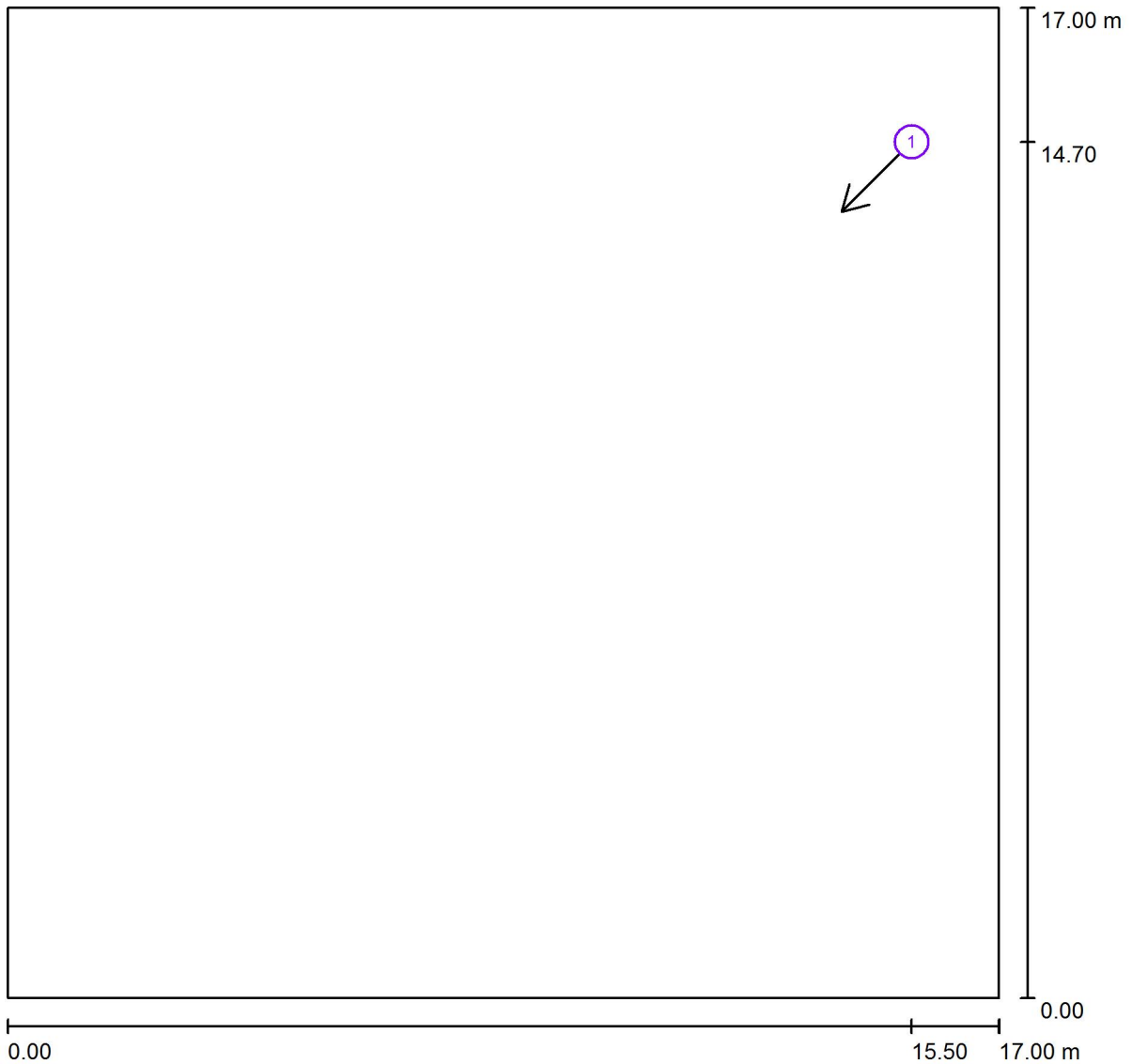
E_{min} / E_{max}: 0.414 (1:2)

Specific connected load: 4.87 W/m² = 1.14 W/m²/100 lx (Ground area: 289.00 m²)



Operator
 Telephone
 Fax
 e-Mail

Office 290m² / UGR Observer (results overview)



Scale 1 : 122

UGR Calculation Points List

No.	Designation	Position [m]			Viewing direction [°]	Value
		X	Y	Z		
1	UGR Calculation points	15.500	14.700	1.200	-135.0	17



Operator
Telephone
Fax
e-Mail

Office 290m² / 3D Rendering

